



100%  
Zero  
Defect

**Mfg. Umiya Enterprise**

UG-7-8-9, Dada Bhagvan Complex, N/H No. 8, Opp. Kholvad Collage,  
Kamrej Char Rasta, Kamrej, Surat-394 190 (Guj.) INDIA

Mobile : 98241 86507 | 98241 86508

email : umiyagold@gmail.com Web : www.pvcwatertank.in

**GOLD  
GROUP**

Manufacturing of  
**ROTO**  
MOULDING  
WATER TANKS  
& PVC PIPE



**WE MAKE  
SENSE**

**LIGHT WEIGHT & DURABLE  
GOOD QUALITY**



## About us ...

We introduce ourselves as the leading manufactures of rotational moulding granules powder, water tank & also manufacturing pvc pipe

We have achieved profound success by providing good quality and wide range of colors with timely commitment.

We have strong infrastructural base, which is equipped with HE Tech labs and skilled persons

We have highly efficient team of production and marketing



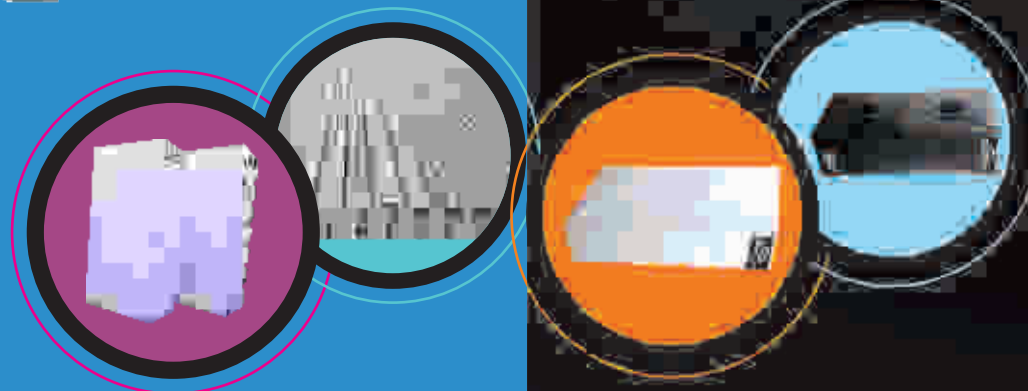


## Experience ...

Our experience in the Extrusion Industrial rotational moulding industries have added great value to the service we provide, with rotational moulding specialist and technical experts available to our clients to make sure their moulding process runs smoothly with a product finish that is aesthetically pleasing, with ultimate product strength.



# UMIYA GOLD GROUP

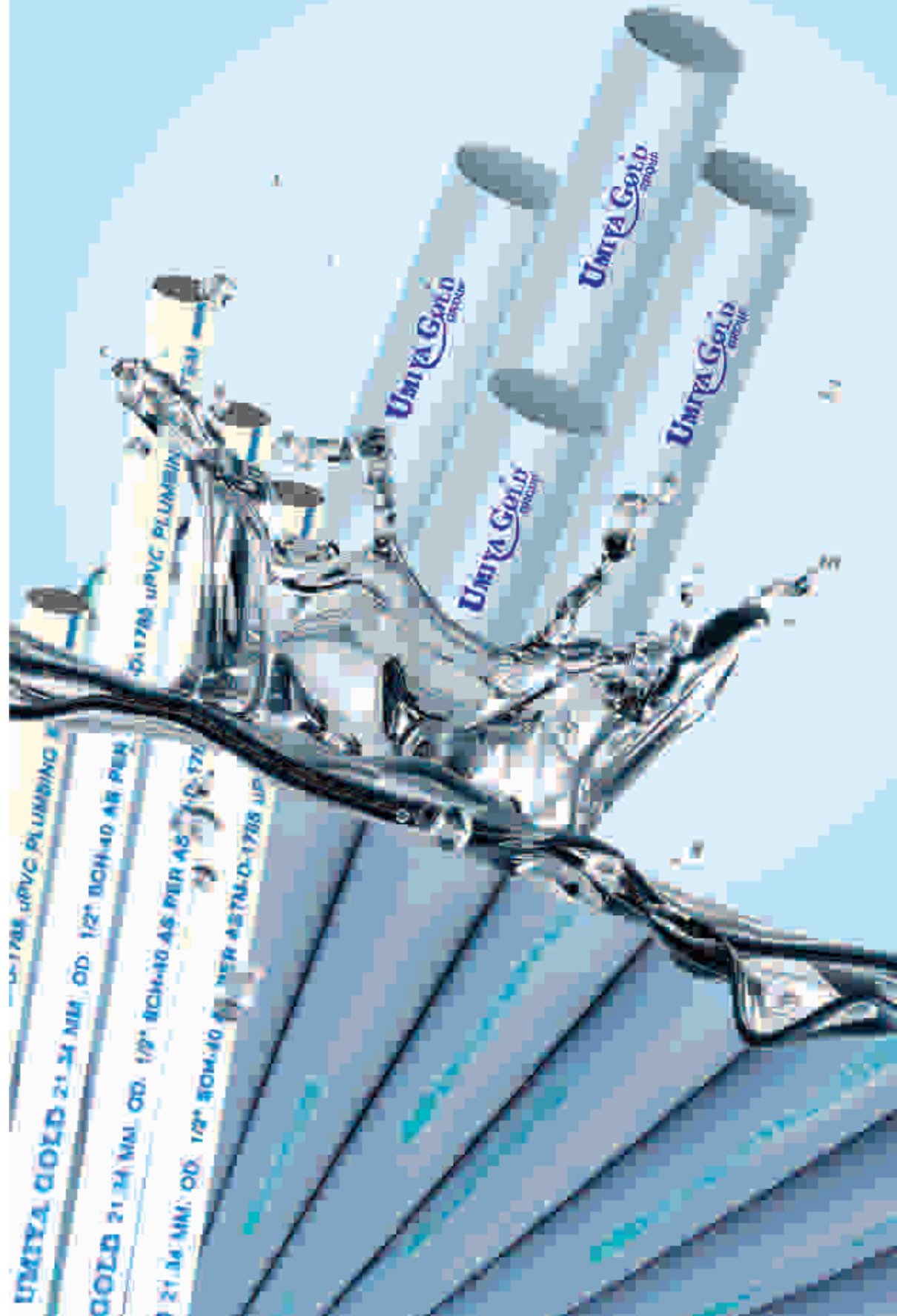


## Product ...

- Umiya Gold are available in different type products
- (1) Umiya Gold Water Tank  
White | Black | Green | Yellow
  - (2) Umiya Gold Loft Tank  
Black & White
  - (3) Umiya Plus  
White | Orange | Black
  - (4) Umiya Tuff  
Black | White | Yellow | Green
  - (5) PVC & uPVC Pipe all size

## Quality ...

We have been providing quality product to delight our customer and is subject to a number of quality control checks before being shipped of an internal quality team to ensure consistency.



### ISI RATE PER PIPE

SR NO.	SIZES OD/MM.	SIZES INCH	CLASS-1 2.5Kg/CM2	CLASS-2 4Kg/CM2	CLASS-3 6Kg/CM2	CLASS-4 10Kg/CM2
1	32	1"				182
2	40	1.1/4"			178	278
3	50	1.1/2"			273	440
4	63	2"		294	424	690
5	75	2.5"		415	596	972
6	90	3"	385	583	855	1,358
7	110	4"	579	854	1,252	2,047
8	140	5"	898	1,398	2,026	3,343
9	160	6"	1,198	1,856	2,662	4,369
10	180	7"	1,530	2,378	3,358	5,537
11	200	8"	1,950	2,976	4,293	6,853
12	225	9"	2,515	3,884	5,571	8,860
13	250	10"	3,056	4,721	6,948	10,984
14	280	11"	3,922	5,975	8,733	13,792
16	315	12"	4,995	7,621	11,110	17,803

### APPROXIMATE WEIGHT LIST NON ISI PIPE

SR NO.	SIZES MM	INCH	4kg / CM2	6kg / CM2	10kg / CM2	SUPER
1	20	3/8"			0.650	0.950
2	25	1/2"			1.000	1.400
3	32	1"			1.300	1.800
4	40	1 1/4"		1.400	2.000	
5	50	1 1/2"		2.000	3.000	
6	63	2"	2.200	2.500	4.000	
7	75	2 1/2"	2.800	3.500	5.500	
8	90	3"	3.300	5.000	7.000	
9	110	4"	5.200	6.800	10.000	
10	140	5"	9.000	11.000	16.000	
11	160	6"	11.000	13.000	25.000	
12	180	7"	17.000	23.000	30.000	
13	200	8"	22.000	27.500	40.000	
14	225	9"	33.000	36.000	50.000	
16	250	10"		44.000	62.000	
18	280	11"				
20	315	12"		68.000	92.000	

### UPVC PIPE "3" METER

SR NO.	SIZES MM	INCH	SCH-40	SCH-80
1	20 MM	3/8"	0.750	0.900
2	25 MM	1/2"	1.000	1.300
3	32 MM	1"	1.400	1.800
4	40 MM	1 1/4"	2.000	2.600
5	50 MM	1 1/2"	2.500	3.300
6	63 MM	2"	3.200	4.100



### UMIYA PLUS RANGE & SPECIFICATIONS

Capacity (Litres)	Dimensions (inch)		
	Dia.	Height	Manhole Size
200	26"	30"	400
300	29"	32.5"	400
500	33.5"	38"	400
750	38.5"	42"	400
1000	43"	48"	400
1500	46"	56"	400
2000	51"	60.5"	400
3000	59.5"	69.5"	400
5000	71"	81"	400
7500	87"	87"	510
10000	87"	114"	510

### UMIYA GOLD RANGE & SPECIFICATIONS

Capacity (Litres)	Dimensions (inch)		
	Dia.	Height	Manhole Size
200	26"	30"	400
300	29"	33"	400
500	34"	37.5"	400
750	33"	43.5"	400
1000	43"	48"	400
1500	49"	56.5"	400
2000	55"	60"	400
3000	59.5"	70.5"	400
5000	71"	81"	400
7500	87"	87"	510
10000	87"	114"	510

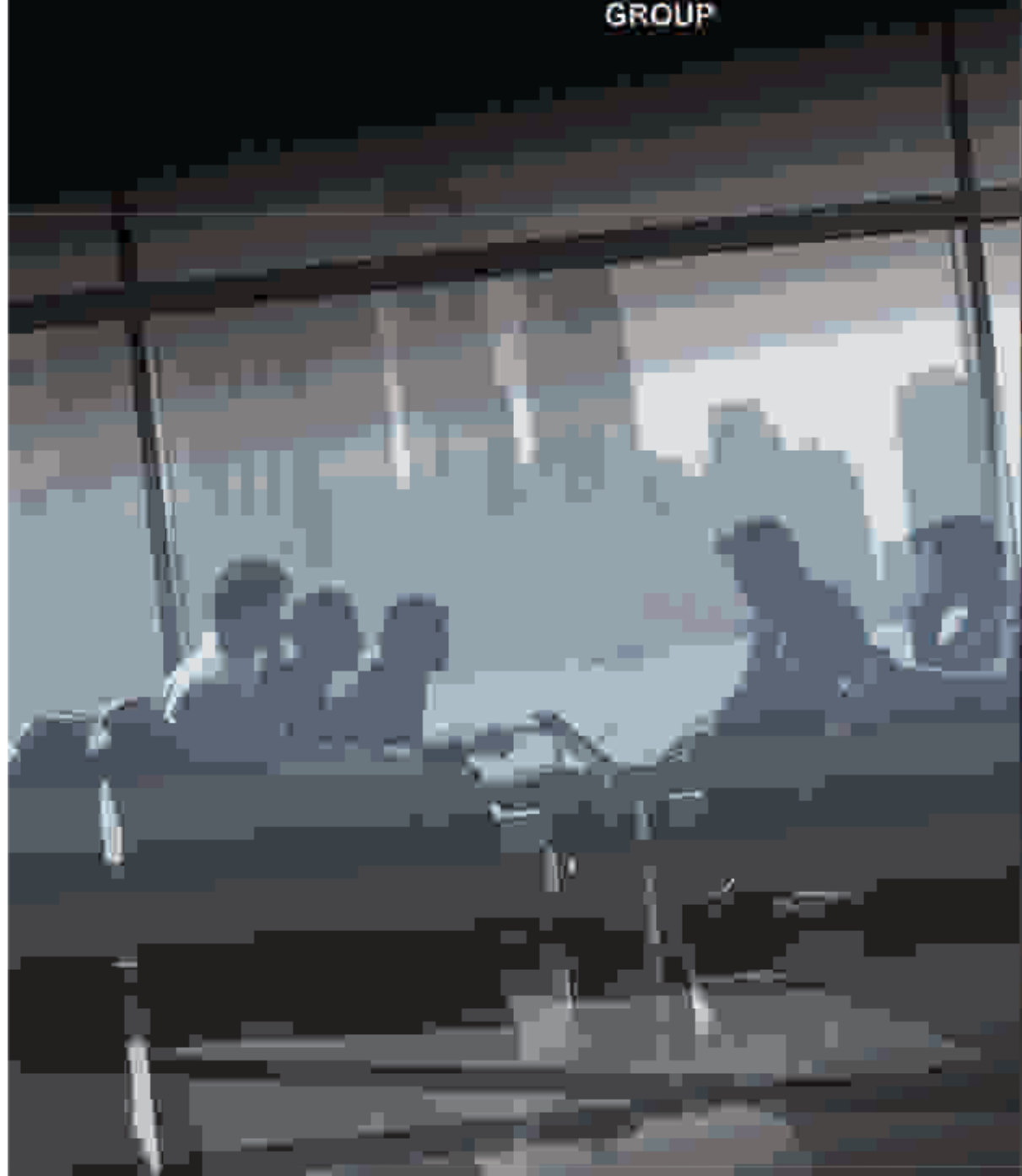
### UMIYA TUFF RANGE & SPECIFICATIONS

Capacity (Litres)	Dimensions (inch)		
	Dia.	Height	Manhole Size
500	33.5	39.5	400
750	39	48.5	400
1000	43	51.5	400
1500	48	55	400
2000	53.5	62.5	400

### LOFT TANKS

Capacity (Litres)	Dimensions (inch)		
	Length	Width	Height
175	27	27	16.3
200	30.5	30.5	13.5
225 (01)	36.8	28	14
225 (02)	34	27	15.5
300	42	28	17.5
315	47.5	37	12
325	46	32.5	12.5
375	42	36.5	15
400	45.5	36	14.5
425	47	36	15.5
450	54.5	38.5	13.5
500 (01)	54	38	15
500 (02)	48.5	37	20
700	66.5	34.5	18.5
750	57.5	37	21
1000	72	38	24





*Aim ...*

*Save Water*

*Save your self*

To satisfy our clients  
with the quality and  
availability of our  
materials at all times



WE HAVE ALL READY COVERED MORE THAN 20 DISTRICT IN GUJARAT AND ALSO COVERED 4 STATE IN INDIA LIKE

- |           |             |                |                |             |                   |
|-----------|-------------|----------------|----------------|-------------|-------------------|
| • SURAT   | • BHARUCH   | • GHOTA UDEPUR | • PATAN        | • BOTAD     | • MAHARASTRA      |
| • NAVSARI | • BARODA    | • PUNCH MAHAL  | • BANASKANTHA  | • BHAVNAGAR | • RAJASTHAN       |
| • VALSAD  | • AHMEDABAD | • DAHOD        | • KUTCH        | • JUNAGADH  | • KARNATAK        |
| • DANG    | • MAHESANA  | • NARMADA      | • GANDHI NAGAR | • RAJKOT    | • MADHYA PARADESH |

